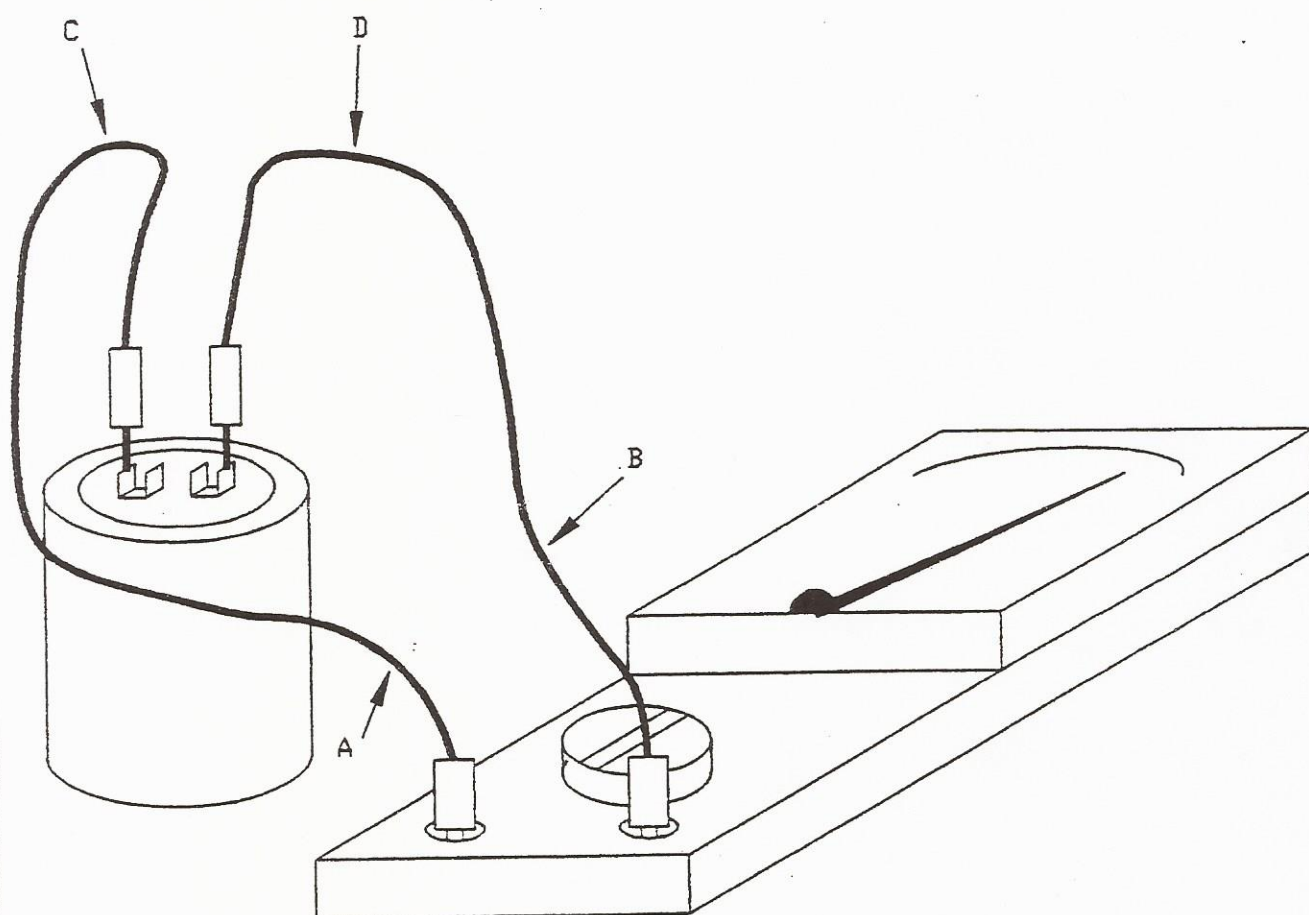


To Check Resonant Capacitor

Tools Needed: Multimeter Set At OHMS X 1000

Note: Remove The Leads From The Capacitor & Discharge

Procedure: Place The Leads Of The Meter 'A' & 'B' On The Capacitor Terminals 'C' & 'D'. The Needle Of The Meter Should Move Toward Zero Resistance, Then Fall Back To Infinity. Bleed The Capacitor. Switch The Meter Leads & Check Again. If The Needle Holds At Zero, The Capacitor Is Shorted. If There Is No Deflection, The Capacitor Is Open. In Either Case Replace The Capacitor.



SENTRY BATTERY CHARGERS - RESONANT CAPACITOR TESTING			
MARINE DEVELOPMENT CORP.	SCALE: NONE	DRAWN BY: REL	DRAWING NUMBER
	DATE: 1/24/96	REVISED:	SKA-623